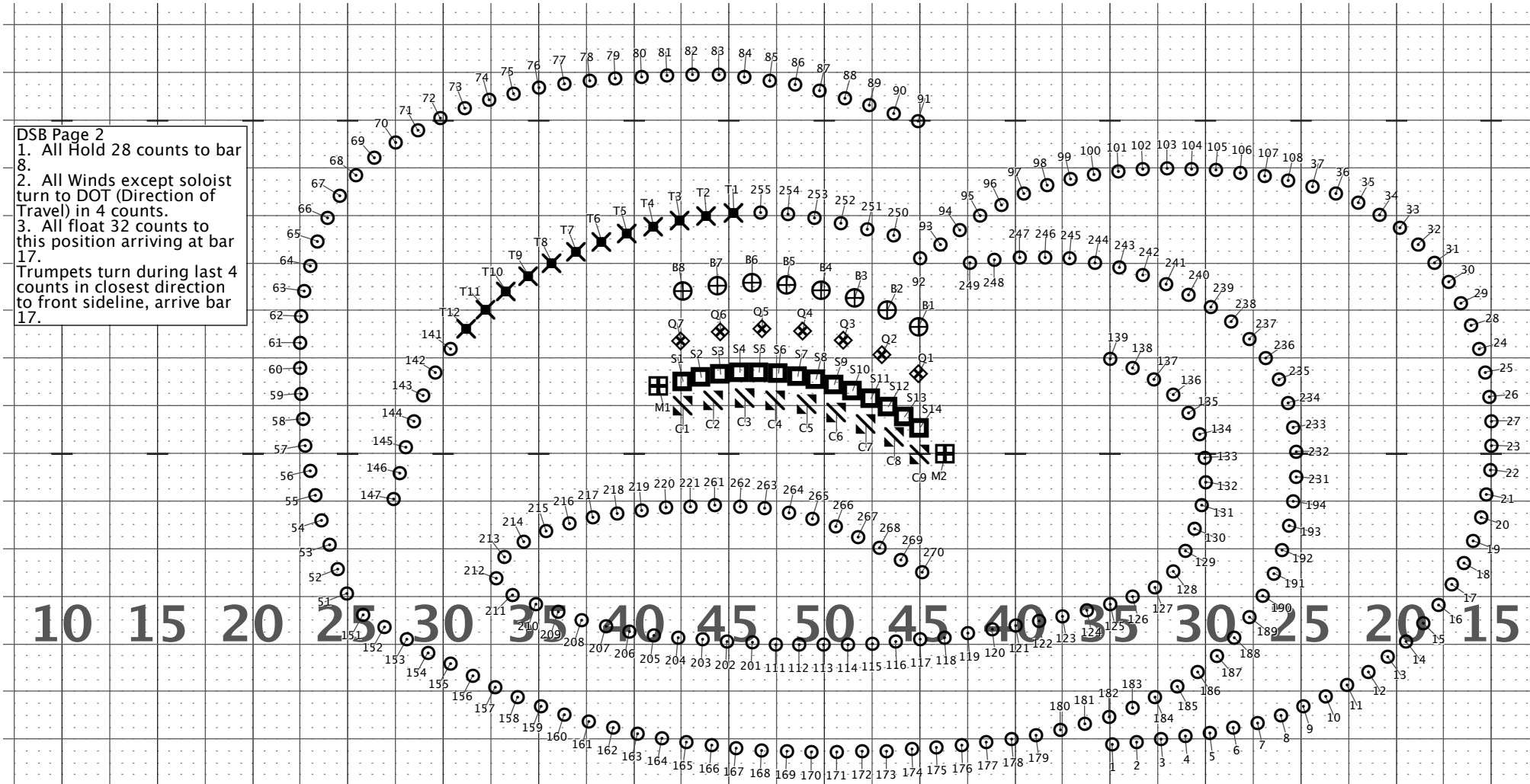


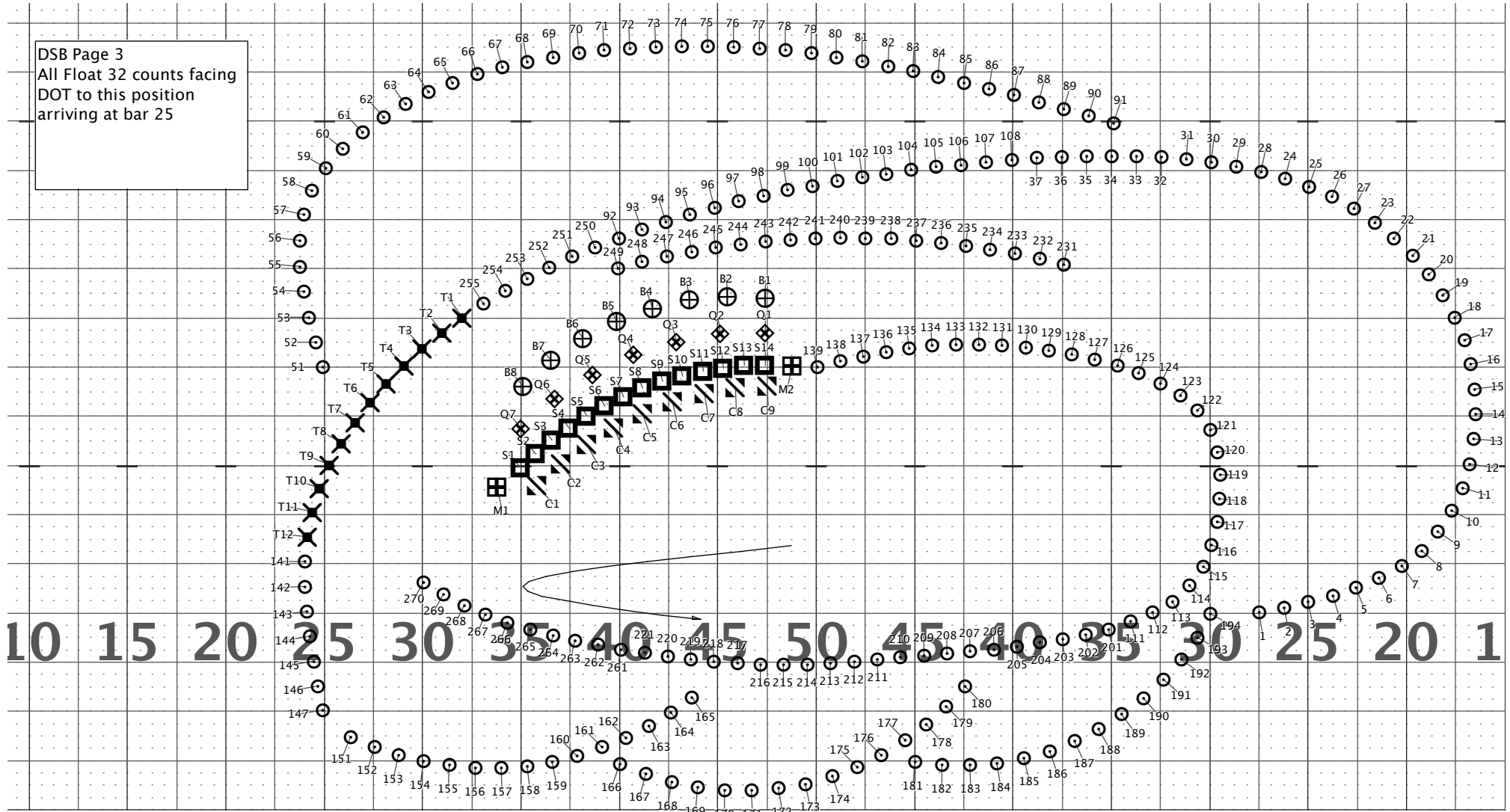
Director Viewpoint



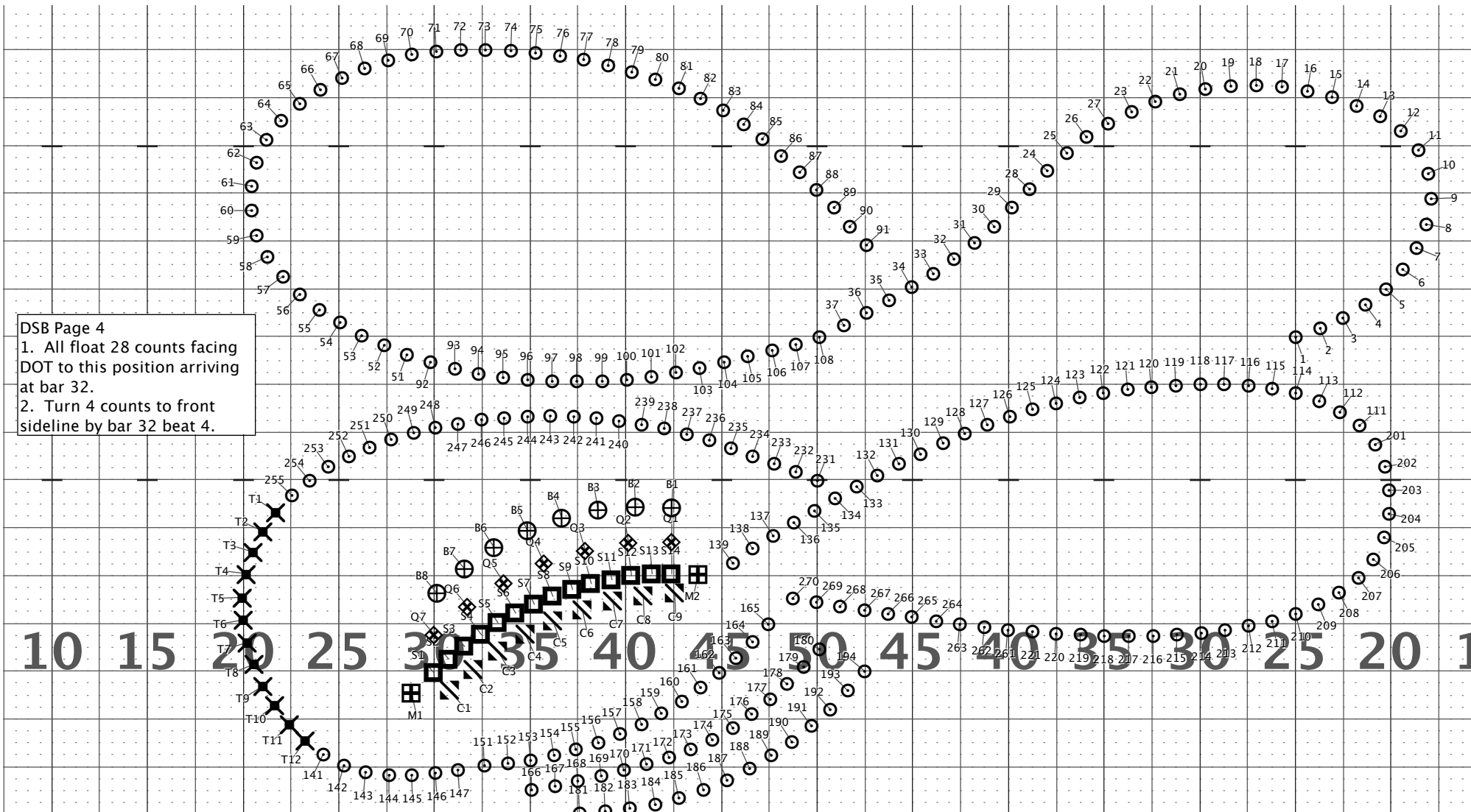
DSB Page 2
 1. All Hold 28 counts to bar 8.
 2. All Winds except soloist turn to DOT (Direction of Travel) in 4 counts.
 3. All float 32 counts to this position arriving at bar 17.
 Trumpets turn during last 4 counts in closest direction to front sideline, arrive bar 17.

Director Viewpoint

DSB Page 3
All Float 32 counts facing
DOT to this position
arriving at bar 25



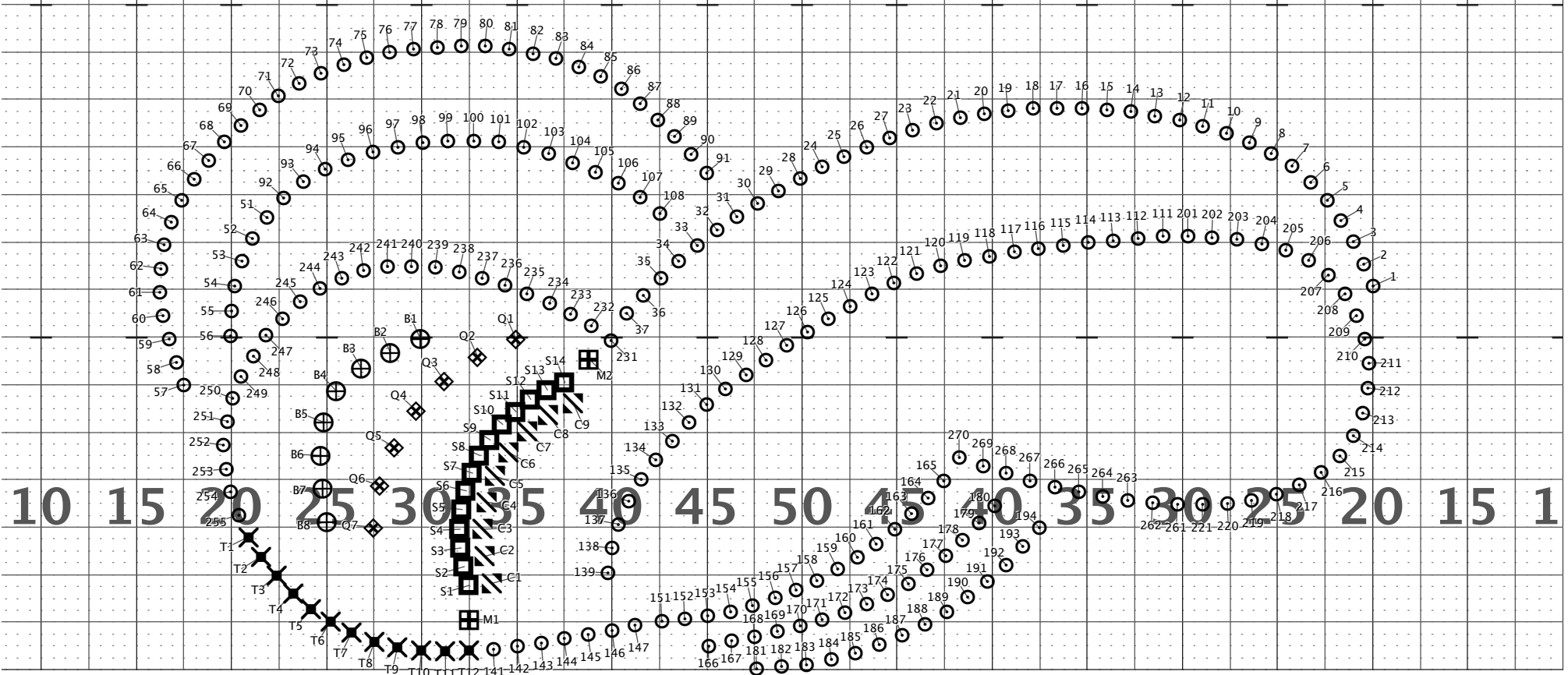
Director Viewpoint



Director Viewpoint

10 15 20 25 30 35 40 45 50 45 40 35 30 25 20 15 1

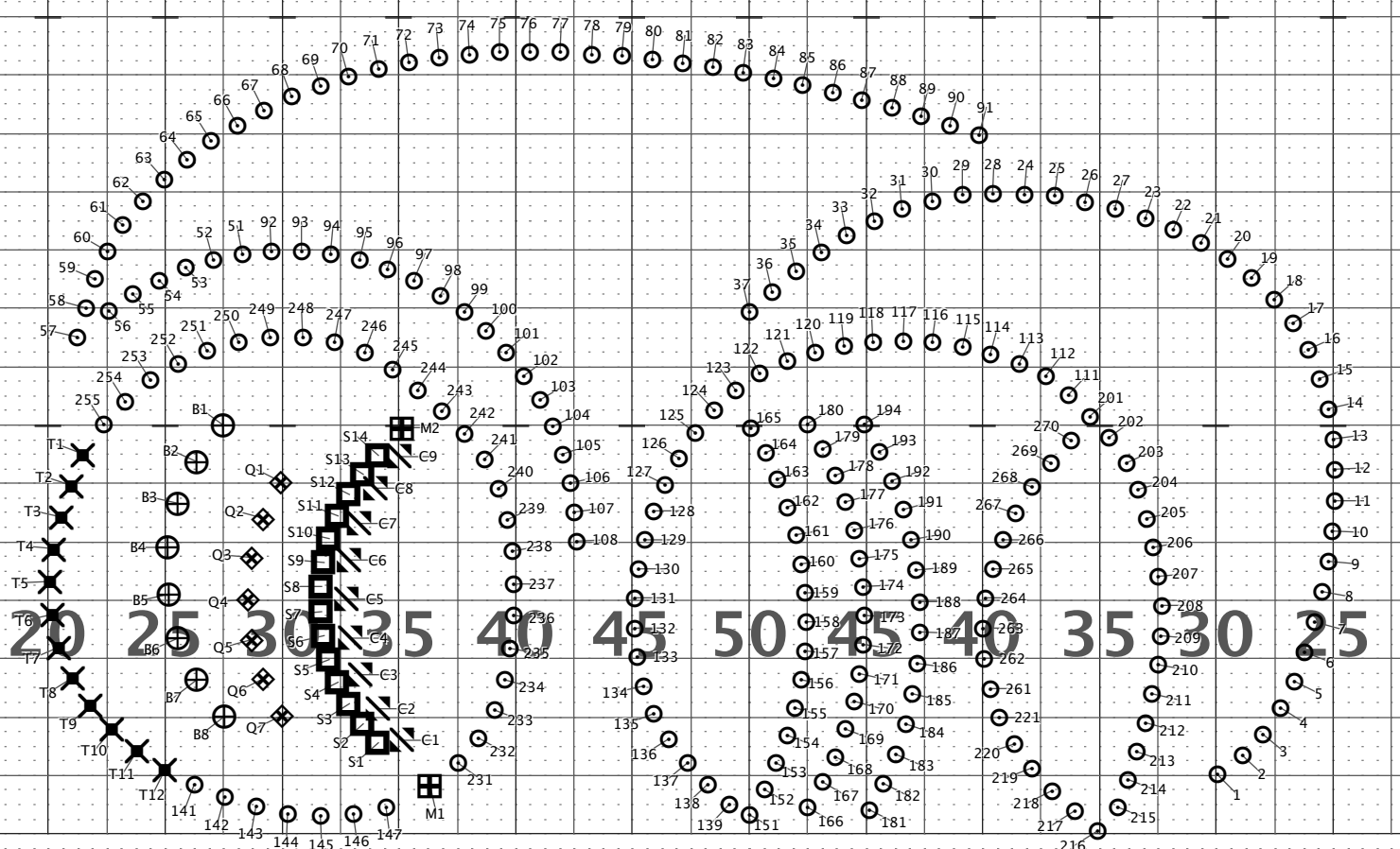
DSB Page 5
1. All Hold 32 counts to bar 41.
2. All float 32 counts to this position arriving at bar 49



10 15 20 25 30 35 40 45 50 45 40 35 30 25 20 15 1

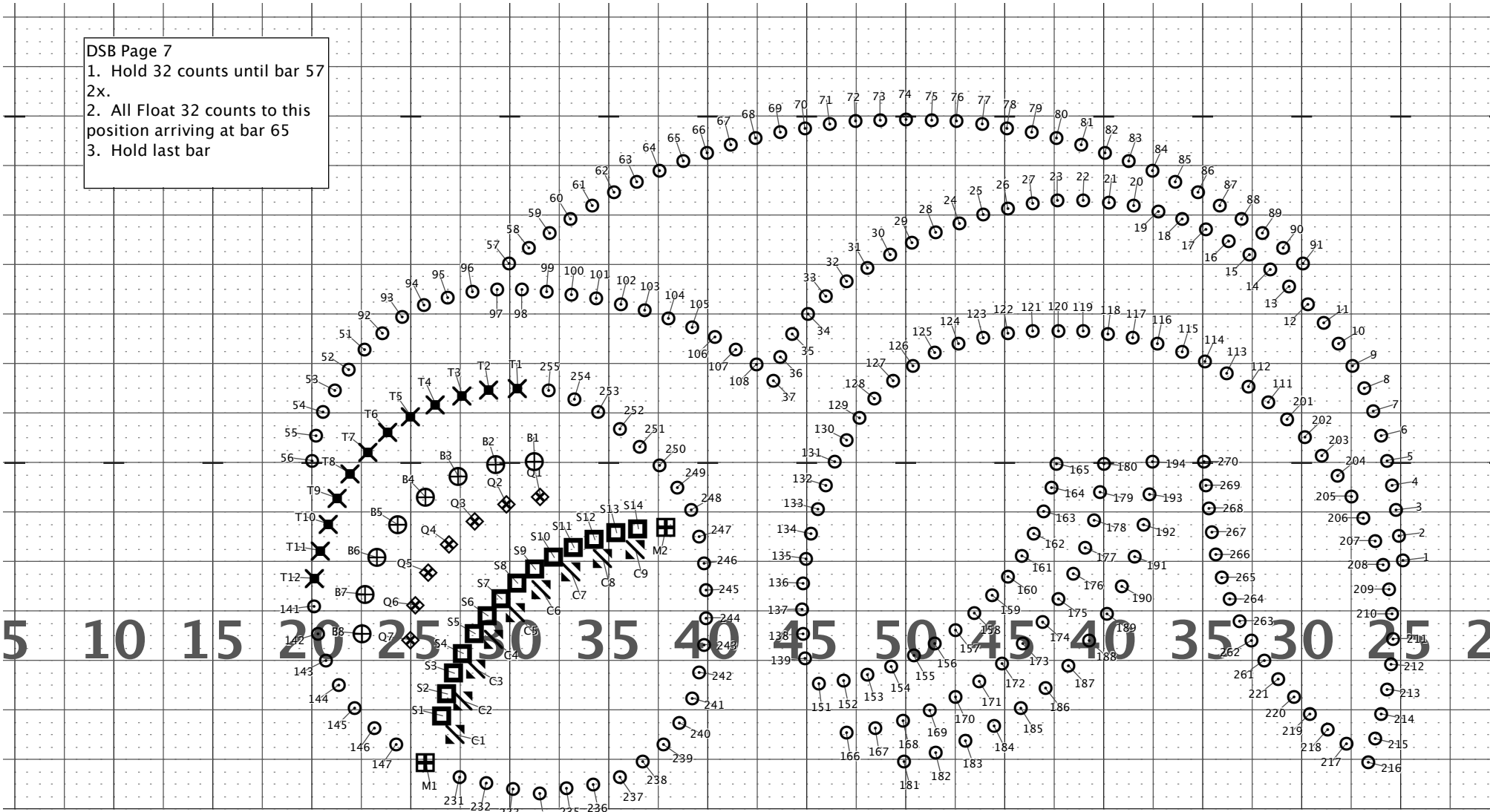
10 15 20 25 30 35 40 45 50 45 40 35 30 25 20 15

DSB Page 6
All Float 32 counts to this
position arriving at bar
57 1x.



10 15 20 25 30 35 40 45 50 45 40 35 30 25 20 15

DSB Page 7
1. Hold 32 counts until bar 57
2x.
2. All Float 32 counts to this position arriving at bar 65
3. Hold last bar



Director Viewpoint